



Summer 2017
Issue 2

Newscape

The Official Newsletter of Escape Arts

Escape 20th Birthday Celebrations

July marked a very special time for the charity. *Escape* originated from two voluntary organisations which were both founded in 1997 by Artistic Directors Robin Wade and Karen Williams. Robin established the *Escape* project in her front room, supporting adults through weekly ceramic workshops and Karen Williams established *Community Art in Action*: creative workshops supporting adults with learning disabilities. Both of these groups still flourish today, *Stratford Escape* every Wednesday and *Paper Moon* every Tuesday. The 20th Birthday celebration resulted in a three day exhibition involving *Escape* work from across all the project venues and activities. It was attended by over 2000 people and was a great opportunity to bring the *Escape* family of staff, volunteers and participants all together. Leading up to the celebrations, *Escape* ran a competition to 'Name The Steer' the fantastic sculpture created by Rachel Higgins which now resides outside the Slaughterhouse. The winning entry was 'Metallic Moo' won by Oliver Hughes from The Willows Primary School.



Volunteering

We are very proud that our Nuneaton volunteers won the 'Creative and the Arts Group Award' at the Nuneaton and Bedworth Volunteer Awards 2017. We would like to congratulate everybody!

Volunteer Week

The Old Slaughterhouse hosted a barbecue to celebrate Volunteer Week, it was a great opportunity to thank our amazing volunteers – *Escape* simply couldn't run without you, each and every one!



Robin Wade Retirement

At this time we say a fond farewell to Robin, who after 20 years of passion and dedication is now retiring. Robin speaks fondly about *Escape*:

"Many changes have taken place for Escape over the past twenty years and so many creative talents have been realised. From small beginnings Escape has grown through the decades and we have all had an extraordinary journey. Timing has been everything; receiving funding through Big Lottery, the Town Trust Challenge and the Arts Council gave us the opportunity to build on all our previous work within the community and allow as many people as possible to share in what we do. The move to the Old Slaughterhouse Arts & Heritage Studio and the investment in the 2016/17 project theme 'Changing Landscapes' has developed the quality of our work and we can benchmark our work at every level, demonstrating the impact of all the work we do with the many individuals across Warwickshire. Over the past twenty years I have had the privilege of working with the most passionate and talented people who truly care about what they do. This has been the key to all our successes. My wish is for Escape to continue to do exactly what it has always done best". Robin Wade

Escape would like to take this opportunity to thank Robin for her commitment and hard work over the last 20 years and to wish her the very best for the future.



Following the success of the 2016/17 project theme 'Changing Landscapes' *Escape* introduces 'Beneath Our Feet' our new theme for 2017/18. This pilot project will explore layers of history with exciting links to science, technology, horticulture and the natural environment: once again bringing together all of our diverse and exciting Warwickshire-wide workshops and activities.

www.escapearts.com

Adult Workshops

Stratford Escape

Wednesdays, 10am - 1pm, OSH

Stratford Escape spent the last few months working towards the 20th birthday exhibition. This included a mosaic project with Carey Moon, exploring the theme 'Life's A Celebration'. Then onto Ali Allen and Ros Ingram's 'Bread' project: using ceramics, fabric and recycled materials, they created a dining room that celebrates old and new ideas for food and feast. They have upcycled an old dresser, made 'make do and mend' curtains, ceramic flying ducks and a standard lamp using all things vintage.



Stratford Escape enjoyed a visit to New Place Gardens, courtesy of Shakespeare Birthplace Trust with artist, Alisha Millar. Alisha is working with the group to develop a piece of public art for the *Lost Garden* project, reflecting the beautiful 19th & 20th Century gardens and water feature once there. Work to be launched at the end of September.



Imagine

July marked the end of the Monday Session with the group working hard to finish work for the anniversary exhibition, mounting their incredible paintings and making fabric bunting with Nicola Richards. Artist, Barbara Fidoe led some lovely work with photographic transfers onto fabrics, exploring personal heritages and stories.



Paper Moon

Tuesdays 1pm-3pm, OSH

Paper Moon have been busy making a recycled plastic flower installation and have been working with Ros Ingram on beautiful ceramic butterflies for the *Lost Garden of Avon* project.



VIP's: Veterans & Interesting Pensioners

1st Thursday of each month, 10am-12pm, OSH

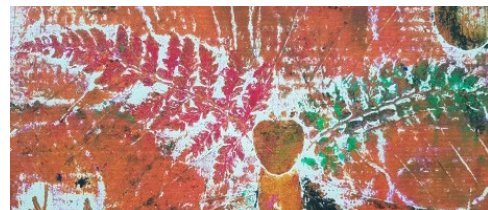
We are delighted that we reunited old friends who'd not seen each other for 70 years. Sid worked as a *Western Region* engine driver when he came to Stratford in 1956 and Jack was a booking clerk on the *London Midland Region* in Old Town. It was great to hear their stories which will help inform September's *Stratford's Lost Railways* exhibition. Jack recently turned 97 and we helped celebrate with our summer barbecue and of course, Roni's home-made cake!



Clifford Chambers

Tuesdays 11am-1pm, Clifford Chambers Garden Centre

In Clifford the group has been working on portraiture with Kate Wiltshire, printing with Carey Moon and beautiful ceramic plaques with Ros Ingram. **NEWS:** from August the *Imagine* and *Clifford* groups will be merging into one, running from *Clifford Garden Centre*.



Nuneaton Escape

Thursdays 10-11 Chilvers Coten Heritage Centre

Masses of enormous flowers and metres of hand printed bunting have been created with Zara Day. These, alongside the bunting and origami decorations made by local schools and *ArtAlert* community workshops will form a display for the *Celebration Tablecloth* event later this year. The group then had their paper cutting skills put to the test, resulting in some fabulous work. Next, Alisha Miller taught *Dotty Art*, and a wonderful collection of mini canvases were made to display for the *Nuneaton Art Trail* in September. We were delighted to welcome new artist, Sara Bishop, who's enabled us to create exquisite and colourful silk batik work which, with our 'Embellished Shoe Lasts' project, led by Escape Link Coordinator Mel, will also feature in the *September Arts Trail*. We have begun the second phase of 'Who I Am', a dementia workbook project and have been invited to deliver a case study and presentation to the *North Warwickshire GP commissioning seminar*.



Nuneaton Stitch Group

2nd Monday of the month 10-1pm, The Old Café, Nuneaton Railway Station.

Artist Zara Day has led a memories project for display at *George Elliot Hospital*, resulting in 5 huge panels depicting the heritage and memories of hospitals in Nuneaton from workhouse days to the present. The ladies are now working on the *Celebration Tablecloth*, learning traditional hand-stitching techniques to embellish a contemporary designed tablecloth. Five of the group have also won awards in the *Nuneaton Festival of Arts* for their stitch and collage work. Well done ladies!



Nuneaton Men's Shed

Tues & Thurs 10am-12pm, George Eliot Hospital

The men have been busy with commissions, including bespoke display stands for the *Nuneaton Train Station Old Café Gallery* (a new venture led by *Art Alert* and *London Midland*) and 2 huge framed art boards for *Waiting Rooms*: a project with local schools. *George Elliot Hospital* have offered the men a secure site for their new home and they have been working hard to promote the group and raise funds for a new shed. They are currently making lots of items to sell at the *Nuneaton Arts Trail* in September.



Clay Club

Thursdays 10am-12pm, Sydni Centre, Leamington

Clay Club at The Sydni Centre realises many original ideas from clay and we often make what our participants say they would like to make. Recently they have chosen koala bears, frogs & some Disney characters too. Friends meet up in this community space that celebrates diversity, they always enjoy lunch & then in the afternoon they join another group called *Let's Dance*.



Children's Workshops

Clopton Bridge Toll House

To support our *Terrible Toll House* exhibition we held free drop-in activities including workshops with our fantastic illustrator, Juliette Jones and Toll House model making. The sessions were extremely popular and both the illustrations and tiny Toll Houses looked fantastic!



Motor Festival

Over the motor festival weekend we had lots of messy fun making and decorating our own wearable cars.



Animation Art Camp

Over May half term children came along to our animation day at The Old Slaughterhouse. Working in small groups they created their own animations from scratch by building sets out of recycled materials and characters out of plasticine. You can watch the animation on our *Escape Arts* YouTube page.



Mumbler Fun Day

On Sunday 4th June we helped at the Stratford Mumbler Family Fun Day fundraiser for the *Birth and Babies* appeal. We offered a variety of activities for families to take part in such as making *Lego* monuments and creating crazy critter animals.



Lego Animation Club

Autumn *Lego* Club is coming! We start on September 16th. Booking is required.

Holiday Arts Camps

This summer we held amazing arts camps. Activities over the summer included *Giant Germs*, *Steam Punk Fun Fairs*, *Miniature World*, *CSI Spy Camp* and *Dinosaurs and Fossils*.



We are now planning our *Children's Halloween Spook Camps* taking place over the October half-term. To book, or find out more information email: emmastuchbury@escapearts.org.uk



Escape Youth Radio

Starting in September we are offering 6-week radio production courses for young people aged 13 to 18 which will enable them to gain skills and knowledge in radio production. Across the 6 weeks they will learn how to run a radio studio and will lead up to a final live radio production which will be broadcast live online. Booking required.



Caterpillar Café

The *Caterpillar Café* is Stratford-upon-Avon's first dedicated family-friendly café held at *The Old Slaughterhouse* every Friday, 9:30-11am. Parents can relax while little ones expand their minds with toys, crafts and story-telling. The group offers monthly talks from childcare professionals to offer help and support. Visit *Facebook @caterpillar.play*.



Partnership Work and Events

Stratford River Festival

This year's River Festival, organised by *BID Stratford* was a huge success for *Escape*. Our dedicated volunteer team worked tirelessly over the two days and smashed our fund-raising target. *Stratford Men's Shed* made us a Duck Shoot, which the children loved and our young musicians, Noah Dobbie, Three Brothers and Blackwater Ridge stole the show at the *Escape Showcase* on the Acoustic stage. A huge thank you to everyone involved.



Shakespeare Hospice

We are delighted to announce that the Hospice Arts Intervention Project has secured funding through Big Lottery and Santander to continue working with children and young people at the hospice and through Warwickshire Young Carers for another 12 months, starting with summer ceramics with Ros Ingram.



Pensioners' Alliance

The *Old Slaughterhouse* welcomed the Warwick branch of the *Pensioners Alliance* in June, who visited as part of their annual outing. They were treated to a talk about *Escape* and *The Old Slaughterhouse* by Ali Allen, the refurbishment of the Clopton Toll House by Niamh Oldham and finally a butchers talk from Mark Pitcher who used to work at *Hensons*. All this was followed by lovely home-made cake by Roni Carter.



SPOTLIGHT

PERSONEL:

Mel Beech

Mel has been the Link Worker at Escape Arts in Nuneaton since its beginnings in 2011. Mel always makes participants, artists and volunteers welcome. She organises trips, helps with exhibitions and bursts into song at the drop of a hat! "I love my job at Escape. It's a privilege to share in their many achievements and I love to see our work on display in the community."



TRUSTEE:

Claire Pitney

Recruited for us by the Town Trust, Claire has now been with us for 2 years. She had always been a volunteer with a number of different organisations, but had a desire to do more and have more of an impact. "I really value the opportunity to be part of Escape and work with such an inspiring group of people. Although my remit is to assist with HR, I love getting involved in whatever comes my way! Thank you everyone....."



VOLUNTEER:

Stella Burton

After hearing about Escape from her friend Sarah, Stella began volunteering 3 years ago, and is a regular at both Paper Moon and the VIP brunch club. Sarah and Stella were Escape's representatives at the recent Stratford Town Council's Birthday Celebration Volunteer Thank-you Event. "I enjoy coming because I like the people and seeing them happy. I also like helping them and messing about with the art work."



PARTICIPANT:

Penny Rodrigues

Penny joined our Stratford group 2 years ago. "I have thoroughly enjoyed the amazing range of art projects and the expert guidance of accomplished artists. Every week has been stimulating and different, and I value the warm and friendly company of all participants: sharing in the creative activities."



Upcoming Events

Clopton Bridge Toll House Exhibition

June - Sept (OSH)

Marie Corelli Exhibition

July - Sept (OSH)

Children's Summer Arts Camps

From Giant Germs & Dinosaurs to Steam Punk Camps

Run each Mon & Tues up until Aug 22nd - £25 (Booking Required) (OSH)

Open Heritage Days

Visit Escape Central Station to find out about Stratford's Lost Railways. Sept 9th & 10th FREE ENTRY (OSH)

Stratford's Lost Railways Exhibition

Sept, Oct, Nov & Dec FREE ENTRY (OSH)

Fun Palaces Weekend

Sat 7th & Sun 8th Oct (OSH)

Halloween Spook Camps

Mon 23rd & Tues 24th Oct (OSH)

Nuneaton Escape - Open Studios

23rd & 24th Sept
Mary Ann Evans Hospice Gardens
<http://www.openartstrail.org>

Men In Sheds

Open Arts Trail 23rd/24th Sept.
Greenmoor Road Allotments, Nuneaton

Adult Evening Classes (OSH)

Ceramic Elephants with Ros Ingram
Mon 18th & 25th Sept, 6.30 - 9.00pm £25

Etched Glass with Ros Ingram
Wed 4th Oct & Wed 22nd Nov, 6.30 - 8.30pm £25

Ceramic Hens with Ros Ingram
Mon 9th & 30th Oct 6.30 - 9.30pm £25

Fused Glass Christmas Decorations with Ros Ingram
Wed 11th & 29th October 6.30 - 8.30 £25

Willow Animals with Rachel Harwood
Mon 16th October 6.30 - 9.30 pm £25

Ceramic Christmas Decorations with Ros Ingram
Mon 13th Nov 6.30 - 9.30pm £25

Felting Workshop with Corinne Davies
Wed 29th Nov 6.30 - 9.30pm £30

Contact us: info@escapearts.org.uk
or telephone: (01789) 532 110



EscapeArts



Escape_Arts



Escape_Arts



Localgiving

www.localgiving.org/donation/escapearts

Other News

Books Section

We now have 5 local authors exhibiting in our shop. These are: *The Shakespeare Silence* by H. M. Evans; *Floozy in The Park* by Ellie Stevenson; *The History of the Shakespeare Society 200* by Susan Brock and Sylvia Morris; *The Boys of Shakespeare's School in the Second World War* by Richard Pearson and T. E. Williams; *The Lost Colour Collection, Volume I* by Phillip Williams. We were proud to host the book launch for *The Lost Colour Collection* (see below) and we hosted a talk on the *Shakespeare 200 Club* in July. All of these brilliant books are available to buy from the *Old Slaughterhouse* shop.



£3000 Donation

Escape would like to say a very big thank you to Leamington-based company *Playground Games* who generously gave us a £3000 donation. Their letter stated they thought the work we do is 'humbling, inspirational and an example to us all'. We cannot say enough how moved we were by this. Thank you, *Playground Games*!



VASA Lunch Club

Super monthly lunch clubs for older people, ran by the wonderful cook, Sam: 2 courses £6. Dates: 21st Sept, 19th Oct, 16th Nov, 21st Dec.



Engage

Escape is joining forces with *Stratford Samaritans Community Hub* to offer a range of activities supporting THE 50+ FESTIVAL, from Saturday 30th September to Sunday 8th October.



An Exhibition telling a brief history of the town's Railway past, featuring artefacts, memorabilia & the photographs of the late Tom Williams, *Flower's Brewery* worker, rail enthusiast & accomplished photographer.

September, through to December, 2017



Venue: The Old Slaughterhouse Arts & Heritage Studio, The Yard, Sheep Street, CV37 6EE
Exhibition Designed & Created by Phillip Williams

Charity No: 1097718

Newsletter designed by Hattie Throssell

